

**F2RL2 Antibody (N-term)**  
**Affinity Purified Rabbit Polyclonal Antibody (Pab)**  
**Catalog # AP12288a****Specification**

---

**F2RL2 Antibody (N-term) - Product Information**

Application	WB, IHC-P,E
Primary Accession	<a href="#">O00254</a>
Other Accession	<a href="#">NP_004092.1</a>
Reactivity	Human
Host	Rabbit
Clonality	Polyclonal
Isotype	Rabbit IgG
Calculated MW	42508
Antigen Region	21-50

**F2RL2 Antibody (N-term) - Additional Information****Gene ID** 2151**Other Names**

Proteinase-activated receptor 3, PAR-3, Coagulation factor II receptor-like 2, Thrombin receptor-like 2, F2RL2, PAR3

**Target/Specificity**

This F2RL2 antibody is generated from rabbits immunized with a KLH conjugated synthetic peptide between 21-50 amino acids from the N-terminal region of human F2RL2.

**Dilution**

WB~~1:1000

IHC-P~~1:10~50

E~~Use at an assay dependent concentration.

**Format**

Purified polyclonal antibody supplied in PBS with 0.09% (W/V) sodium azide. This antibody is purified through a protein A column, followed by peptide affinity purification.

**Storage**

Maintain refrigerated at 2-8°C for up to 2 weeks. For long term storage store at -20°C in small aliquots to prevent freeze-thaw cycles.

**Precautions**

F2RL2 Antibody (N-term) is for research use only and not for use in diagnostic or therapeutic procedures.

**F2RL2 Antibody (N-term) - Protein Information****Name** F2RL2

**Synonyms** PAR3

**Function** Receptor for activated thrombin coupled to G proteins that stimulate phosphoinositide hydrolysis.

**Cellular Location**

Cell membrane; Multi-pass membrane protein.

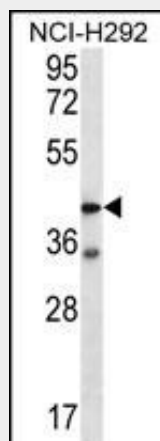
**Tissue Location**

Highest expression in the megakaryocytes of the bone marrow, lower in mature megakaryocytes, in platelets and in a variety of other tissues such as heart and gut

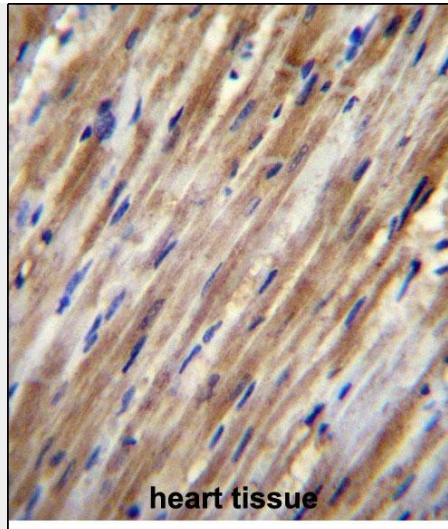
**F2RL2 Antibody (N-term) - Protocols**

Provided below are standard protocols that you may find useful for product applications.

- [Western Blot](#)
- [Blocking Peptides](#)
- [Dot Blot](#)
- [Immunohistochemistry](#)
- [Immunofluorescence](#)
- [Immunoprecipitation](#)
- [Flow Cytometry](#)
- [Cell Culture](#)

**F2RL2 Antibody (N-term) - Images**

F2RL2 Antibody (N-term) (Cat. #AP12288a) western blot analysis in NCI-H292 cell line lysates (35ug/lane). This demonstrates the F2RL2 antibody detected the F2RL2 protein (arrow).



F2RL2 Antibody (N-term) (Cat. #AP12288a) immunohistochemistry analysis in formalin fixed and paraffin embedded human heart tissue followed by peroxidase conjugation of the secondary antibody and DAB staining. This data demonstrates the use of F2RL2 Antibody (N-term) for immunohistochemistry. Clinical relevance has not been evaluated.

#### **F2RL2 Antibody (N-term) - Background**

Coagulation factor II (thrombin) receptor-like 2 (F2RL2) is a member of the large family of 7-transmembrane-region receptors that couple to guanosine-nucleotide-binding proteins. F2RL2 is also a member of the protease-activated receptor family and activated by thrombin. F2RL2 is activated by proteolytic cleavage of its extracellular amino terminus. The new amino terminus functions as a tethered ligand and activates the receptor. F2RL2 is a cofactor for F2RL3 activation by thrombin. It mediates thrombin-triggered phosphoinositide hydrolysis and is expressed in a variety of tissues.

#### **F2RL2 Antibody (N-term) - References**

Bailey, S.D., et al. Diabetes Care 33(10):2250-2253(2010)  
Popovic, M., et al. J. Thromb. Thrombolysis 30(2):164-171(2010)  
Van Laer, L., et al. Eur. J. Hum. Genet. 18(6):685-693(2010)  
Wysoczynski, M., et al. Mol. Cancer Res. 8(5):677-690(2010)  
Talmud, P.J., et al. Am. J. Hum. Genet. 85(5):628-642(2009)